



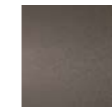
LIPP ARMCHAIR - LIPP 'RATTAN'

design Piero Lissoni

Armchair with supporting frame in multilayer poplar wood and padding in differentiated density polyurethane foam and acrylic fibre layers, with "capitonné" detail. Outer shell also available covered in Rattan with acrylic painting finish col. natural, dark brown "testa di moro" or anthracite grey. Seat chassis in solid fir wood, sprung with cross-woven coated rubber elastic straps and padded in polyurethane foam covered in 100% polyether thermally bonded onto a polyamide velveteen backing.

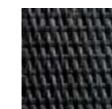
Seat cushions in prewashed and sterilized goose down, stitched into separate compartments, with differentiated density polyurethane foam insert. Tubular steel feet, joined by a bracket in square section 15x15 mm, with epoxy powder coating burnished color and adjustable black plastic tips. Frame upholstery, with capitonné working, non-removable in both leather or fabric versions. Rattan version with non-removable upholstery. Seat cushion upholstery in fabric or leather, both fully removable by zippers. Seat depth: 61cm.

Bracket and Feet

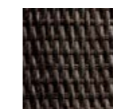


Burnished
Painting

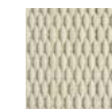
Shell (Lipp "Rattan")



Rattan
col. Anthracite
Grey

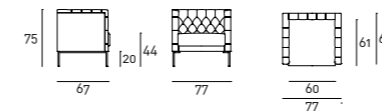


Rattan
col. Brown
Testa di Moro

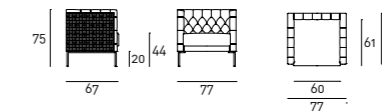


Rattan
col. Natural

Technical Drawings



Rattan



Loose Cushion



Notes

The detail Capitonné cannot be done with leather Cuoietto.

For leather coverings the "Leather A" or "Leather B" Maintenance Kit is included with the product.

For information on the compatibility of the collection's coverings with each product, please refer to the [compliance sheet](#) provided in the "Materials" section of the website.

