



KIGI

design Junpei & Iori Tamaki

Freestanding complementary furniture consisting of a hanger element in aluminium tube Ø30 mm covered in wood essence, to which is attached a curved solid wood element, which acts as hook for hanging bags and jackets; empty-pockets tray Ø190 mm in solid wood, screwed by steel plate to a Ø16 mm steel tube.

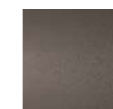
Both elements are fixed by means of tie-rods to a steel sheet base Ø390 mm. Floor support provided by plastic tips.

Wooden element finish: oak, natural or charcoal-dyed acrylic paint.
Metal parts finish: epoxy powder coating in Gunmetal grey or burnished color.

Base



Gunmetal Grey
Lacquering



Burnished
Painting

Structure

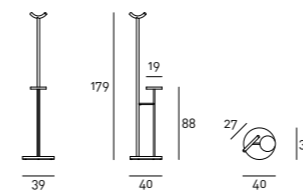


Natural Oak



Charcoal-dyed
Oak

Technical Drawings



Notes

Wood is a living material; therefore, it can have slight color and dimension changes. The presence of any non-homogeneous color shades is not to be considered a defect but a quality. Please note that the direct sunlight exposure may alter the wood color; therefore, we recommend the periodic position shift of the objects placed on the furniture for the first months to avoid differences in shades between exposed and covered portions.

—
Coat Hanger with structure in natural oak
and base with gunmetal grey lacquering

