



BALESTRO 24

design Piero Lissoni

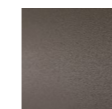
Fixed-size sofa available with armrests and backrests in a woven version or upholstered in fabrics and leathers from the collection.

Woven version: Armrest and backrest structure made of Ø 20mm tubular steel woven with Cellulose Cord "full weave" or hide profile, in the colours available in the collection.

Upholstered version: Armrest and backrest structure made of 40x10mm section tubular steel and structural elastic material, covered in 100% polyether thermally bonded onto a polyamide velveteen backing. Fabric or leather upholstery, both fully removable by Velcro fastenings. Supporting frame in 30x30mm tubular steel, to which are fixed with a bushing armrest and backrest's structure and a 8mm thick HPL panel veneered and edged with Canaletto walnut with water-based acrylic paint finish.

Seat cushion in differentiated density polyurethane foam covered in 100% polyether thermally bonded onto a polyamide velveteen backing. Fabric or leather upholstery, both fully removable by zippers and Velcro fastenings. Drawn steel feet Ø22mm, screwed to the base with a bushing and with adjustable black PVC tips. All metal parts are painted with epoxy powder coating burnished colour.
Seat depth without loose cushions: 81 cm.
Seat depth with loose cushions: 65 cm.

Structure and Feet



Burnished
Painting

Top

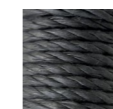


Canaletto
Walnut

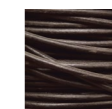
Weaving



Cellulose
Rope Profile
col. Natural



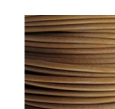
Cellulose
Rope Profile
col. Black



Hide Rope
col. Brown



Hide Rope
col. Black

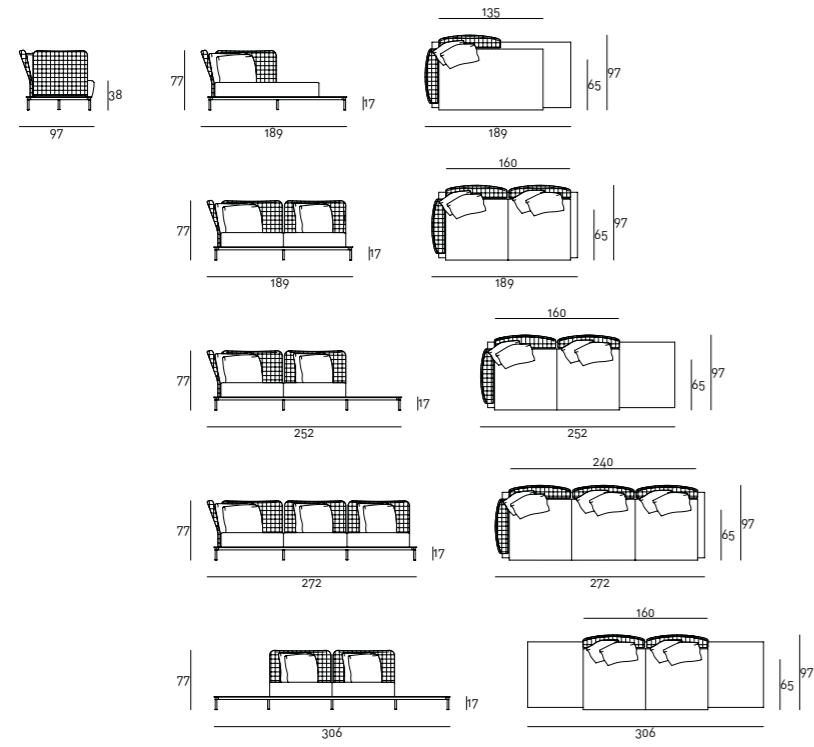


Hide Rope
col. Natural

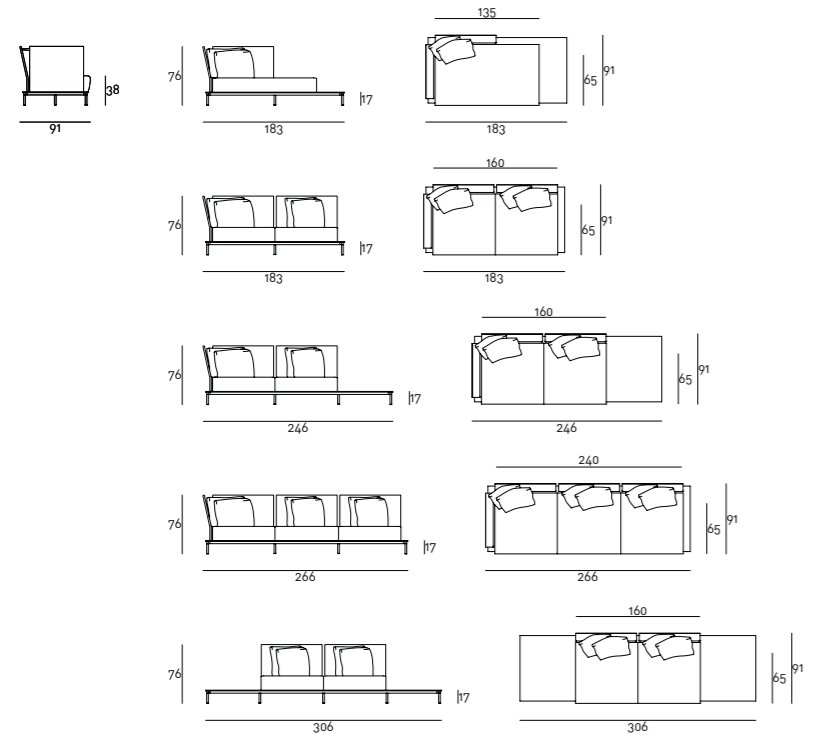
Notes

For each seat included in the price no.2 feather cushion 50x50cm.

Technical Drawings
Woven sofa



Upholstered sofa



Loose cushions

