



AERO D

design Shibuleru

Desk consisting of monobloc top and side shelves (right or left, optional) in veneered MDF fitted with holes and bushings to allow the fixing of the legs; worktop consisting of two tops fixed together by a central "H" support, which creates a front open compartment L.71, D.27 H.6cm and a rear compartment, that can be inspected through a magnetized panel, to house electrical sockets and chargers.

Upper top finish, veneered with natural or charcoal-dyed chestnut and Stone Oak® with water-based finish, or multilaminar Striped Grey wood veneer with acrylic finish.

Lower top and shelves always lacquered matt black.

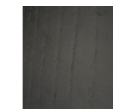
Legs in Ø22mm steel rod, with inserted fixing elements and integrated height-adjustable PVC feet, finish with epoxy powder coating in RAL-K7 9010 white or RAL-K7 9017 black, or gunmetal gray colour.

The version with shelves only, is fitted with a supplementary steel support with integrated height-adjustable PVC feet, secured to the bottom shelf.

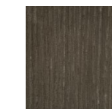
Top



Natural Chestnut



Charcoal-dyed Chestnut



Stone Oak®



Striped Grey

Uprights



Painted Steel
RAL-K7 9017
Black

Shelves



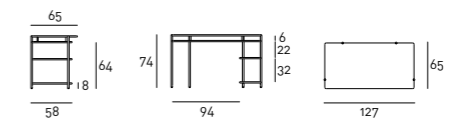
Lacquered
Matt Black

Technical Drawings

Desk



Desk with shelves



Notes

Stone Oak®: this wood owes its particular coloring to an entirely natural process. Because of this, some slabs may look more brown than others. Our commitment is to provide you a high quality product; any differences in color should not be considered as defects.

Striped Grey: it is a decorative multilaminar wood veneer, always finished with a transparent acrylic painting, which features exclusive patterns reproducing the natural characteristics of wood. We would like to remind you that, being a natural and living wooden material, it may present non-homogeneous colour shades, which are peculiarities of the material itself.

On request, an additional protective (acrylic solvent) painting is available for the Stone Oak® finishing only. It should be noted that this additional coating slightly changes the natural color and texture of the surface. Although this supplementary painting increases the surface resistance, it is still a natural material; therefore small superficial stains, due to oil or other substances, have to be promptly removed, before being absorbed in depth by the wood. Thus, we recommend regular care and maintenance.

