



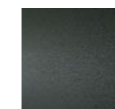
CLIVIO | OUTDOOR

design Keiji Takeuchi

Daybed with a load-bearing frame in tubular steel with a section of 20x20 mm, coated with epoxy polyester powders for outdoor use in gunmetal grey, and strapped with elastic rubber straps coated with stainless steel hooks. The padding consists of open-cell polyurethane foam (DRYFEEL S) and exterior fibre flaps covered with a water-repellent fabric lining.

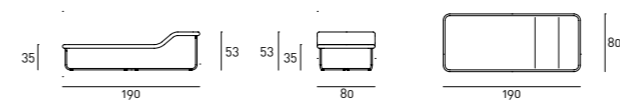
The base is made of tubular stainless steel AISI 316 with a diameter of 20 mm, coated with gunmetal grey epoxy polyester powders, and connected to the load-bearing frame with pins. The upholstery is available only with outdoor collection fabrics and is fully removable through a zipper.

Base



Gunmetal Grey
Lacquering
(In-Outdoor)

Technical Drawings



Notes

For the OUTDOOR version is available a protective cover to preserve the product in summer and winter. This cover is water vapour repellent and prevents mould and corrosion. It can be washed with water and soap. Do not keep the fabric folded for a long time when it is wet.