



## CEIBA

design Luis Arrivillaga

Coat-hanger composed by four "C-shaped" elements, of various heights, joined together by means of a central pin that, thanks to a "compass" opening, allows to place each element in various positions; the recommended opening angle between elements is 90°. The structure, made by a CNC machine then manually finished, is in

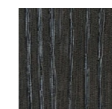
solid ash wood, Ø30mm, with acrylic painting finish, natural colour with acrylic water based finish, or charcoal dyed, with acrylic base and acrylic painting finish. The spacer rings, Ø30mm, placed between each element, are in black phosphate coated steel. Floor support secured by plastic feet.

---

### Structure



Natural  
Ash



Charcoal-dyed  
Ash

---

### Technical Drawings

